

ENGINEERING STANDARDS 2022			
REVISONS		ENGINEERING DIVISION CITY OF POMPANO BEACH	TYPICAL CONFLICT (SEWER)
BY	DATE		
S.S.	JUNE 2008		
S.S.	02/13/12		
SCALE: N.T.S.		DATE: JUNE 2008 Dwg. NO. <div style="text-align: right;">206-1</div>	

ENGINEERING STANDARDS 2022					
REVISONS					
BY	DATE	ENGINEERING DIVISION CITY OF POMPANO BEACH		SEWER PIPE IDENTIFICATION	
S.S.	07/30/12				
		SCALE: N.T.S.		DATE: JUNE 2023	
				DWG. NO. 207-1	

ENGINEERING STANDARDS 2022			
REVISONS		ENGINEERING DIVISION CITY OF POMPANO BEACH	UTILITY PIPE AND MARKER BALLS LOCATION
BY	DATE		
S.S.	01/30/02		
SCALE: N.T.S.		DATE: JUNE 2002 DRG. NO. 208-1	

REVISIONS		ENGINEERING DIVISION CITY OF POMPANO BEACH	MIN. HORIZONTAL SEPARATION FOR SANITARY SEWER
BY	DATE		
S.S.	01/30/12		
SCALE: N.T.S.		DATE: JUNE 20 DWC. NO.	209-1

ENGINEERING STANDARDS 2022		
REVISIONS	ENGINEERING DIVISION	SEWER BOX AND COVER HEAVY TRAFFIC
BY DATE	CITY OF POMPANO BEACH	
S.S. 12/06/19		
	SCALE: N.T.S.	DATE: JUNE 2019 DWG. NO. 210

ENGINEERING STANDARDS 2022			
REVISIONS		ENGINEERING DIVISION CITY OF POMPANO BEACH SCALE: N.T.S.	TRAFFIC RATED SEWER COVER <div><div>DATE: JUNE, 2022 DWG. NO. 211-i</div></div>
BY	DATE		

ENGINEERING STANDARDS 2022			
REVISIONS		ENGINEERING DIVISION CITY OF POMPAÑO BEACH	MANHOLE COUPLING
BY	DATE		
S.S.	JUNE 2020		
SCALE: N.T.S.		DATE: JUNE 2022 DWG. NO. 212-1	

REVISIONS		ENGINEERING DIVISION CITY OF POMPANO BEACH	STANDARD MANHOLE
BY	DATE		
S.S.	JUNE 2005		
T.W.	11-2007		
S.S.	12-2013		
SCALE: N.T.S.		DATE: JUNE 2022 DWG. NO.	215-1

REVISIONS		ENGINEERING DIVISION CITY OF POMPANO BEACH	SHALLOW TYPE MANHOLE	
BY	DATE		DATE: JUNE, 2002 DWG. NO. 216-1	
S.S.	JUNE 2005			
T.W.	11-2007			
A.S.	09-2021			
SCALE: N.T.S.				

ENGINEERING STANDARDS 2022			
REVISIONS		ENGINEERING DIVISION CITY OF POMPAÑO BEACH	SIDEWALK DETAILS
BY	DATE		
		DATE: JUNE 20, 2018 DWG. NO. 18-001	

ENGINEERING STANDARDS 2022			
REVISIONS		ENGINEERING DIVISION CITY OF POMPAÑO BEACH	GUARD POST
BY	DATE		
		DATE: MAY 2 DWG. NO. 000	

ENGINEERING STANDARDS 2022			
REVISIONS		ENGINEERING DIVISION CITY OF POMPAÑO BEACH	SURFACE RESTORATION
BY	DATE		
S.S.	5/05/10		
			DATE: MAY 20 DWG. NO. 000

REVISIONS		ENGINEERING STANDARDS 2022	
BY	DATE	ENGINEERING DIVISION CITY OF POMPAÑO BEACH	SURFACE RESTORATION
			DATE: MAY 2022 DWG. NO. 206-2

ENGINEERING STANDARDS 2022			
REVISIONS		ENGINEERING DIVISION CITY OF POMPANO BEACH	TYPICAL SCREEN FOR UTILITIES
BY	DATE		
TCW	APRIL 2010		
SCALE: N.T.S.		APPROVED BY:	DATE: MAY 2022 DWG. NO. 315-1

<p>NOTES</p> <p>PLEASE NOTE THAT PER CITY ORDINANCE(S) 50.02(A) (4) AND 100.30(B), STREET TREES SHALL NOT BE PLACED ON TOP OF OR 5' OF EITHER SIDE OF ANY CITY OWNED UTILITY INFRASTRUCTURE. ALSO, PLEASE NOTE THAT NO TREES SHOREROYER OR OBSTRUCTION SHALL BE PLACED WITHIN A 3' RADII OF A CITY OWNED LATERAL, CLEARDIRT OR WATER & SHALL BE MAINTAINED.</p>													
<p align="center">ENGINEERING STANDARDS 2022</p>													
<p>REVISIONS</p> <table> <tr> <th>BY</th> <th>DATE</th> </tr> <tr> <td> </td> <td> </td> </tr> <tr> <td> </td> <td> </td> </tr> <tr> <td> </td> <td> </td> </tr> <tr> <td> </td> <td> </td> </tr> </table>		BY	DATE									<p align="center">ENGINEERING DIVISION CITY OF POMPAHO BEACH</p> <p align="center">SCALE: N.T.S.</p>	
BY	DATE												
<p align="center">REQUIRED TREE LOCATIONS</p>		<p>APPROVED BY: _____</p> <p>DATE: MAY 2022 PAGE NO: 316-1</p>											

ENGINEERING STANDARDS 2022

5.130 (18) 0.145
0.130
0.100
0.075 (22)

R-30.50 (#6, 2)
REINFORCING BARS IN SLAB - 12" P.C.

DETAIL B

REVISIONS	
BY	DATE
	ENGINEERING DIVISION
	CITY OF POMPAÑO BEACH
	SCALE: N.T.S.

ADA Detectable Warning Mat

APPROVED BY:

DATE: MAY 2022
DWG. NO. 318-I

REVISIONS:

1. _____
2. _____
3. _____
4. _____
5. _____
6. _____
7. _____
8. _____

ENT:
LLR ARCHITECTS, INC.
9000 SHERIDAN STREET
SUITE 158
PEMRBOKE PINES, FL, 33024

CONSTRUCTION DETAILS

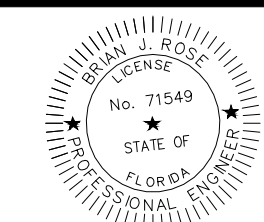
PROJECT:

PROJECT:

GGB Engineering
CIVIL AND FORENSIC ENGINEERS • LAND PLANNERS
• CONSTRUCTION MANAGERS
FLORIDA REGISTRATION NO. 30256
Fax: (954) 986-6655
2699 Stirling Road, Suite C-202
Phone: (954) 986-9899
Fort Lauderdale, Florida 33312

DATE: <i>FEB, 2025</i>	SCALE: N.T.S.
DESIGNED BY: <i>B.J.B.</i>	DRAWN BY: <i>A.R.</i>

PROJECT NO.	25-0349
SHEET	C-006.2



This document has been digitally signed and sealed by Brian J. Ross, P.E. On the date adjacent to the seal. Printed copies of this document are not considered signed and sealed and the signature must be verified.